

## MJS-40 repair jig

### Introduction

MJS-40 is a production, Aftersales and R & D engine module repair jig.

The purpose of the repair jig is to provide a method of applying voltage from an external power supply when the module is out of its mechanics.

The repair jig provides following functions:

- Fused protection
- Overvoltage protection
- Reverse polarity protection
- ESD protection
- Decoupling capacitors
- Access to exposed components
- BlueTooth coupler

It is intended that the repair jig should be used under all circumstances where an external supply to the phone is required to be applied while the phone is out of its mechanics.

It should be noted that the supply voltage to the repair jig is intended to be the same as normal battery voltage range i.e. 3.0-4.2V.

Nominal supply voltage is 3.6V.

Note: Supply voltage must not exceed 5V! (Fuse will blow)

Sales package products	Product code
MJS-40 Module Jig	0770385

The MJS-40 is designed for testing/repairing the engine separately, engine mounted with lightguide assembly or / and with keymat.

*Note: Supplier has the warranty of the service tool. If repair of the service tool is necessary, this is agreed between the supplier and the user of the service tool.*

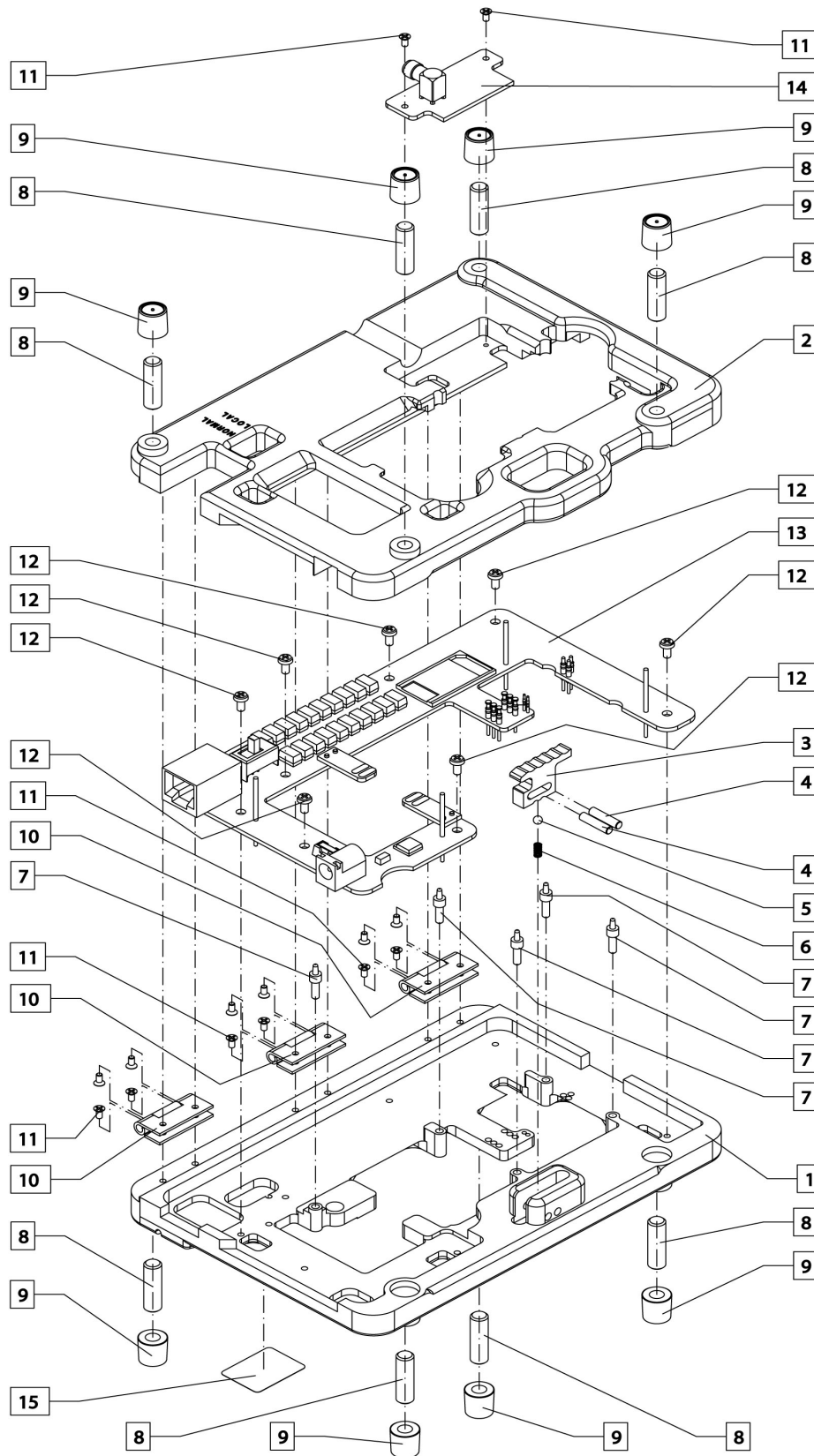
## List of mechanical parts

Part number	Name of Part	Material code	Drawing number	Qty	Notes
1	Bottom		SME5S758	1	
2	Cover		SME5S756	1	
3	Latch part		DMD04393	1	
4	BN684 3x12 SN12771B	640B003		2	
5	Guide pin plastic		DMD2558POM	5	
5	Ball SKF/RB-3.0/IV	640B006		1	
6	Spring TFR0.35x3x5.5	640B000		1	
8	Leck	9560062		8	
9	Bottom foot	9460224		8	
10	Hinge	6490013		3	
11	Screw 965ZNM2.5x8			12	
11	Screw 965ZN M2x4			4	
12	Screw M2.5x6	6150411		7	
13	LOI2_01 module			1	
14	Btant2_01 module			1	Including 5420025 SMA connector angle
15	Clamp	9510389		1	
16	Screw M3x10	6160191		2	
18	Ground pin		SME9S216	4	

## Packing Material & Marking Material

Name	Material code	Pcs.
Carton	9650356	1
Foaming	9660112	5
Extra fuses	511A004	2
Type label	9380154	1
Warning label	9380160	1

Exploded View



## MJF-9 Docking station

### Introduction

Docking station adapter MJF-9 is designed for adapter between the Docking Station JBV-1 and the transceiver. Docking station adapter MJF-9 has following main electronic function:

- Phone recognizing from BTEMP

With JBV-1 it is possible to calibrate and flash the transceiver.

### List of modules

Name of module	NMP code	NMP code	Notes
Docking station adapter	MJF-9	0775298	Docking station adapter to AMS usage

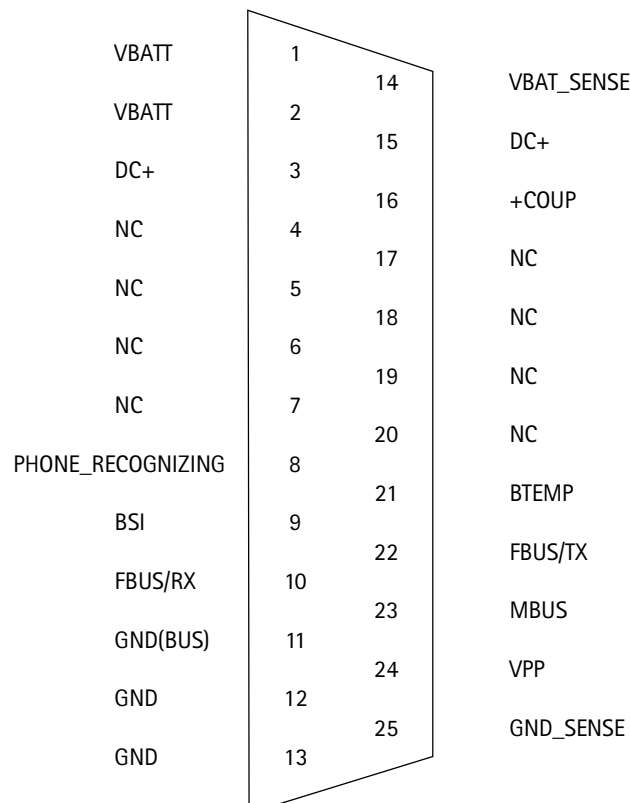
### Technical Data

#### DC characteristics

Parameter	Min	Nom	Max
Recognizing voltage from BTEMP	0,108V	0,111	0,114V

#### D- connector signals

D-connector (male) is between MJF-9 and JBV-1.

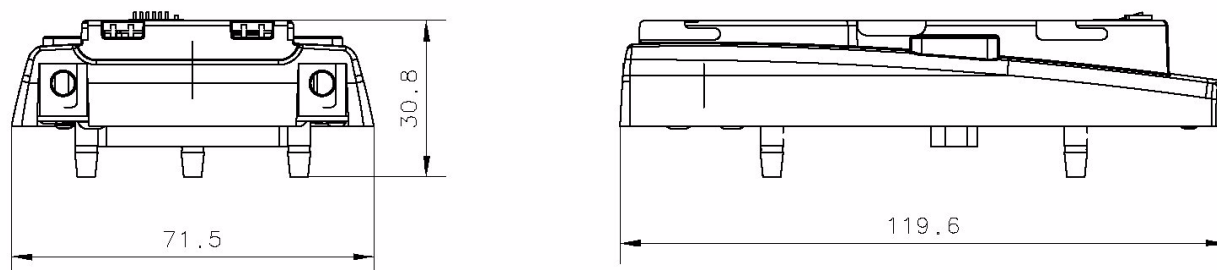


**Table 5: D-connector signal description**

Pin	Signal	Description	Min	Max
1,2	VBATT	Battery voltage to phone	3.0V /0A	4.2V / 1.5A
3, 15	DC+	Supply voltage to JBV-1		
4	NC	Not connected		
5	NC	Not connected		
6	NC	Not connected		
7	NC	Not connected		
8	PHONE_RECOGNIZING	Phone recognizing from jig. Active low	0	+coup ( 3.3V)
9	BSI	BSI signal from phone		
10	FBUS/TX	FBUS TX signal from modular connector		
11	GND(BUS)	GND from modular connector. Not connected to battery GND on JBV-1		
12,13	GND	Battery voltage GND		
14	VBATT_SENSE	Battery voltage sense. Used for regulator voltage feedback		
16	+COUP	Coupler voltage	3.0V	3.3V
17	NC	Not connected		
18	NC	Not connected		
19	NC	Not connected		
20	NC	Not connected		
21	BTEMP	BTEMP signal from phone		
22	FBUS/RX	FBUS RX signal from modular connector		
23	MBUS	MBUS signal from modular connector		

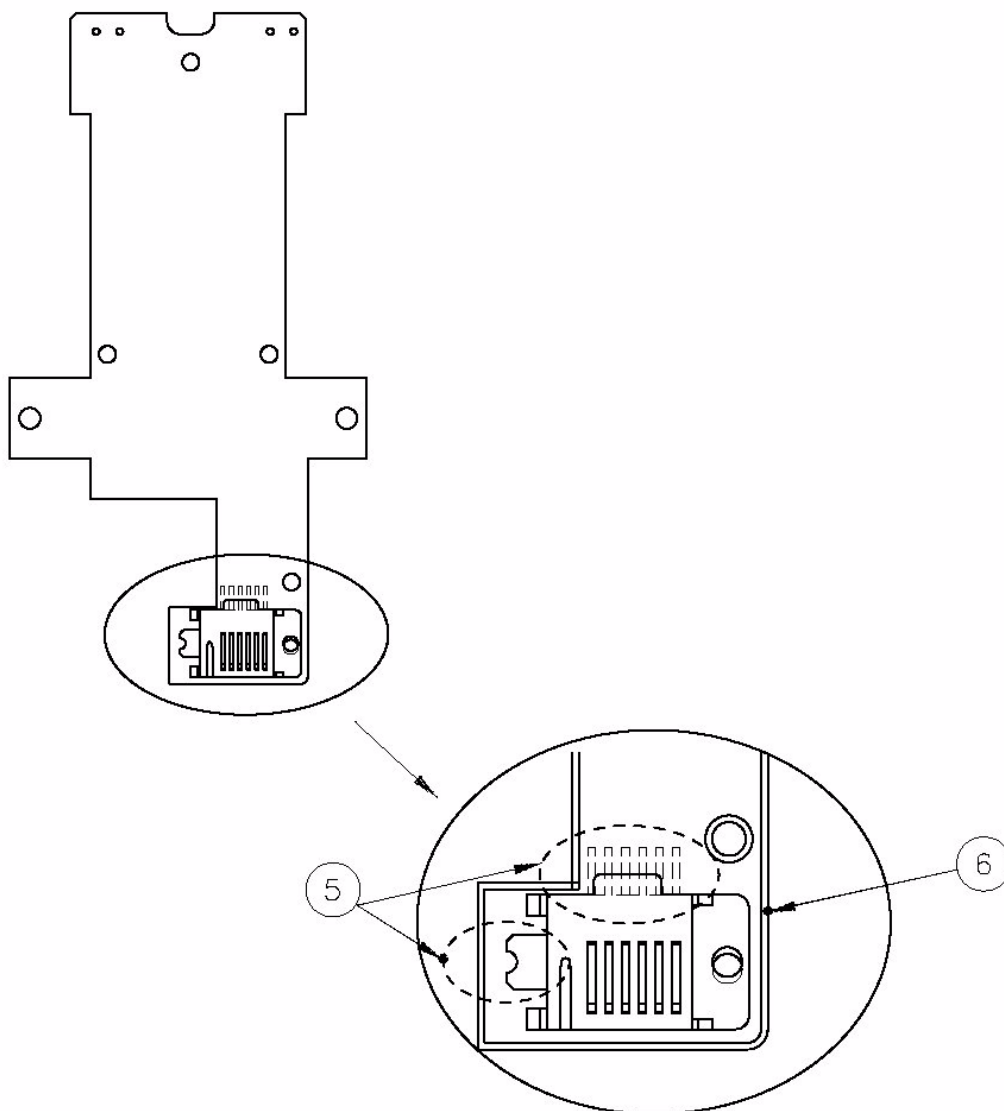
**Mechanical characteristics**

Unit	Dimensions (mm) (W x H x D)	Weight (g)	Material
MJF-9	71,5 x 30,8 x 119,6	155	ABS/PC



**Figure 3. Main dimensions of MJF-9**





- 1 Remove solder from MBUSIBI connector's 6 pins and GND pin (5.)
- 2 Remove the connector and install new one on PCB
- 3 Ensure that the new MBUSIBI connector's hole is against PCB's hole (6.) and the pins are in middle of pads
- 4 Solder the connector to its place

## Docking Station Adapter

### Cables:

RF: XRC-1B (0730128)

System: XCS-4 not shown (0730178)

Power: PCS-1 not shown (0730012)



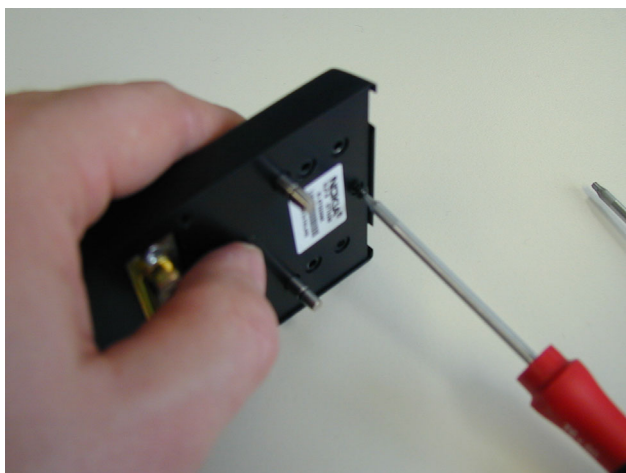
Cable Support Part HCA-1 (0770433)

Installation see following

Only necessary if XRC-1B is used

MJF-9 Docking station adapter (0775298)

## Installing the cable support part

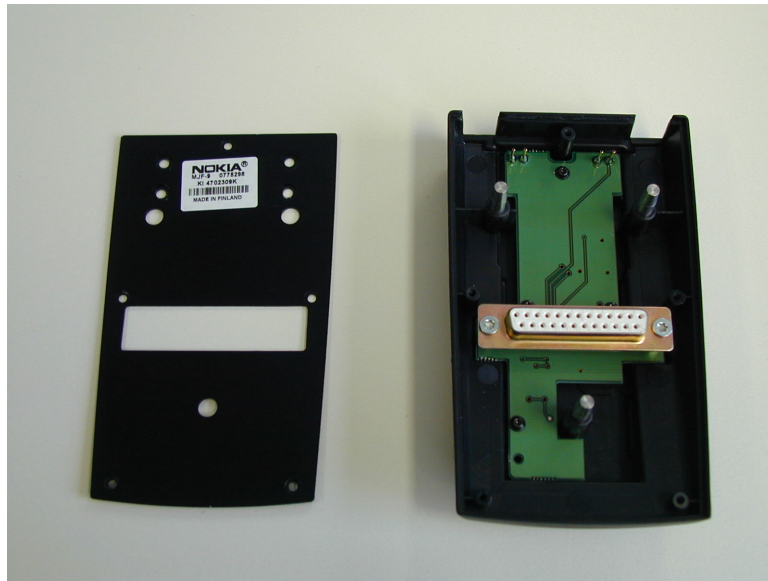


Remove the MJF-9 cover

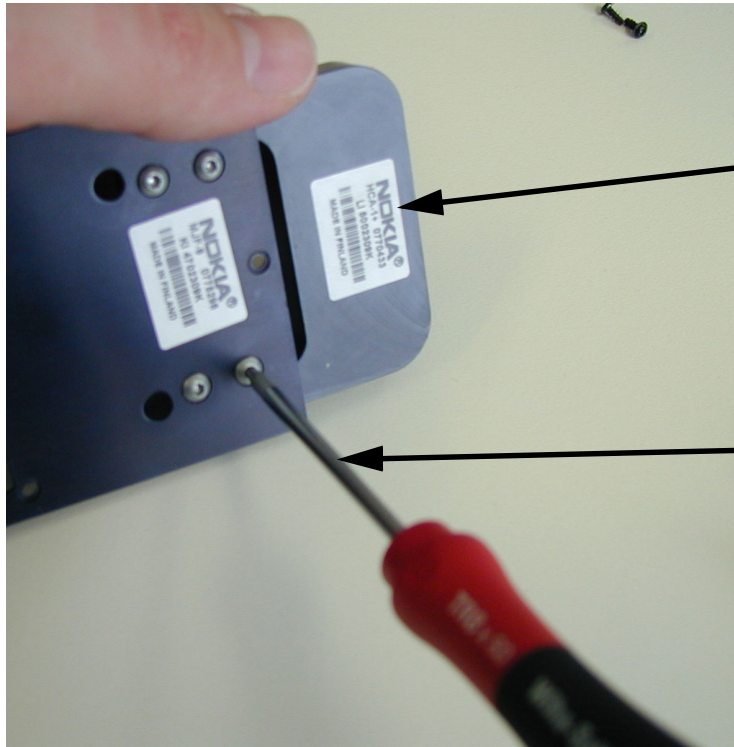
Use T6 screw driver

(5 screws)



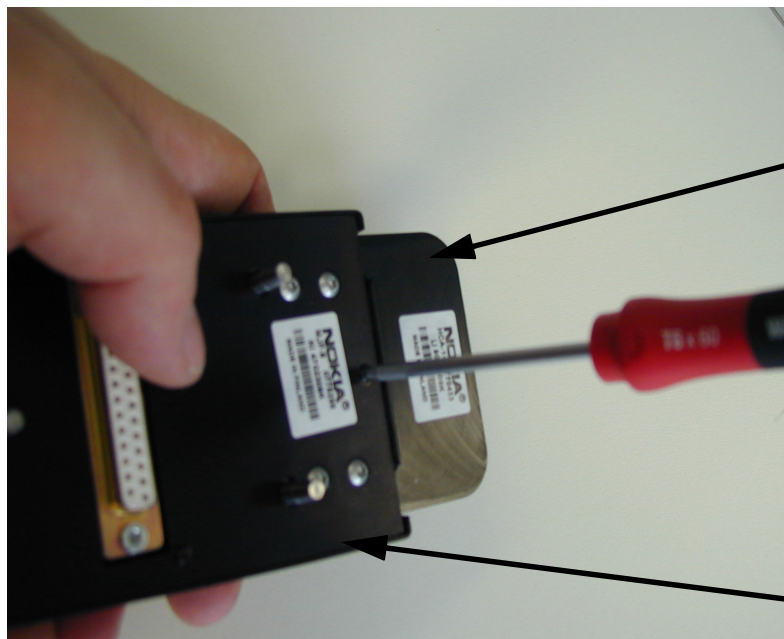


**Cable support part HCA-1 (0770433)  
(including 4 screws)**



Cable support part HCA-1  
(0770433)

Use T8 screw driver for  
attaching the cable support  
part to the MJF-9 cover



Cable support part HCA-1

Use T6 screw driver for  
closing the cover again

MJF-9 Docking station  
adapter (0775298)